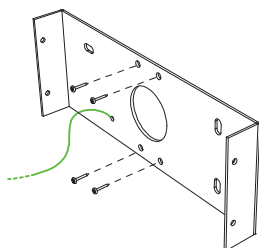


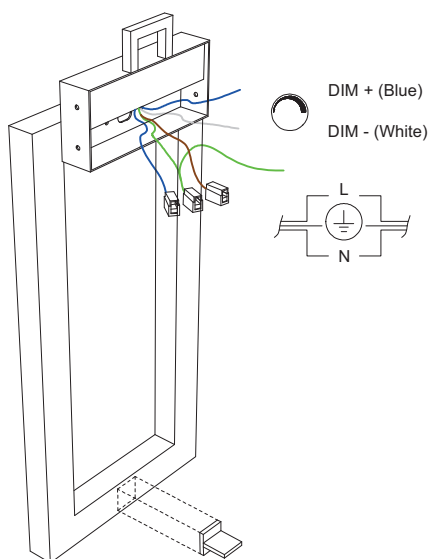
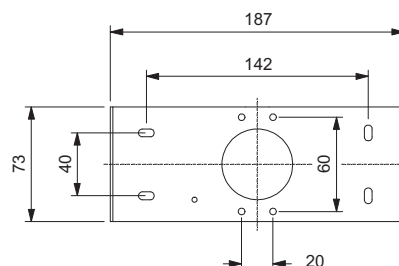
## INSTALLING INSTRUCTIONS - ISTRUZIONI INSTALLAZIONE

ALL OPERATIONS MUST BE CARRIED OUT BY QUALIFIED PERSON  
TUTTE LE OPERAZIONI DEVONO ESSERE EFFETTUATE DA PERSONALE QUALIFICATO



- ① Fix the bracket to the wall.

Fissare la staffa a parete.  
(utilizzare i tasselli forniti)

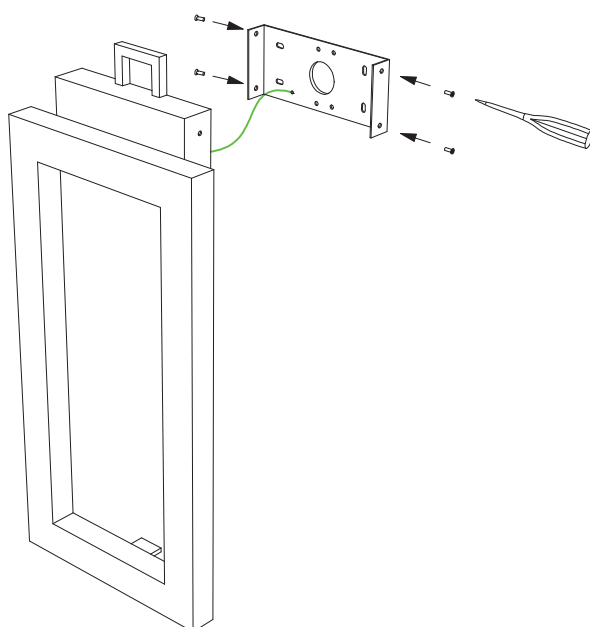


- ② Connect the wires cables following the sketch.

Connettere i cavi della corrente  
seguendo lo schema.

- ③ Please attach the support on the back side of the frame as shown.

Applicare il distanziale sul retro della  
cornice come mostrato.



- ④ Fix the lamp to the bracket using the screws provided.

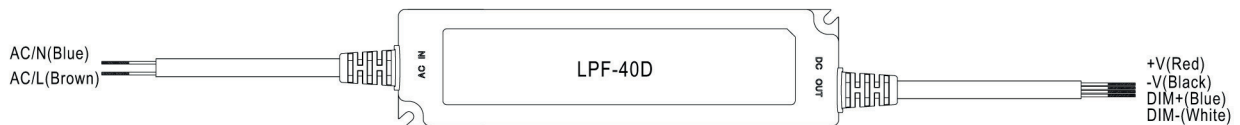
Fissare la lampada alla staffa a  
parete utilizzando le viti fornite.

## INSTALLING INSTRUCTIONS - ISTRUZIONI INSTALLAZIONE

ALL OPERATIONS MUST BE CARRIED OUT BY QUALIFIED PERSON  
TUTTE LE OPERAZIONI DEVONO ESSERE EFFETTUATE DA PERSONALE QUALIFICATO

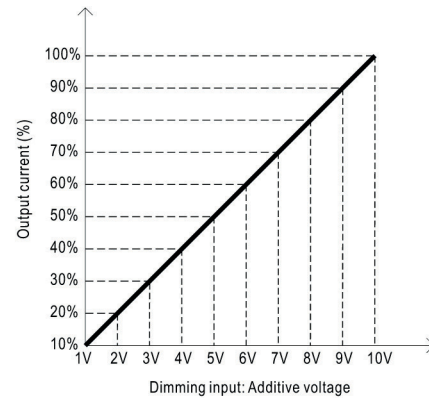
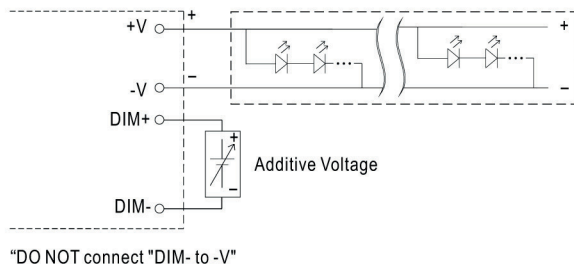
## ■ DIMMING OPERATION

※ 3 in 1 dimming function

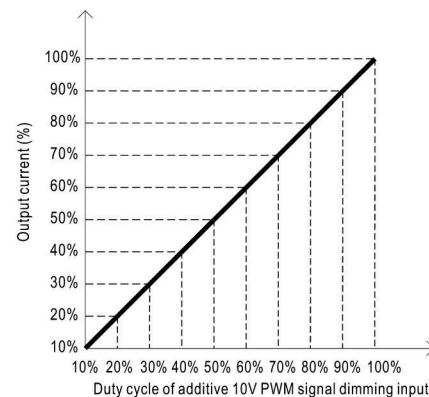
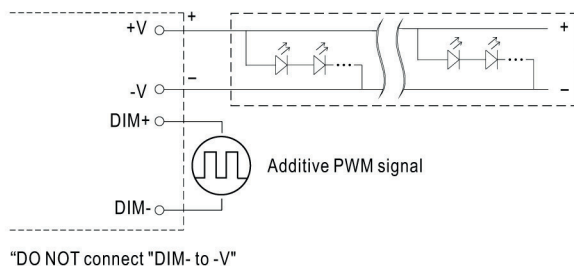


- Output constant current level can be adjusted by applying one of the three methodologies between DIM+ and DIM-:  
1 ~ 10VDC, or 10V PWM signal or resistance.
- Direct connecting to LEDs is suggested. It is not suitable to be used with additional drivers.
- Dimming source current from power supply: 100 $\mu$ A (typ.)

◎ Applying additive 1 ~ 10VDC



◎ Applying additive 10V PWM signal (frequency range 100Hz ~ 3KHz):



◎ Applying additive resistance:

