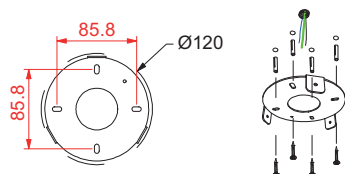


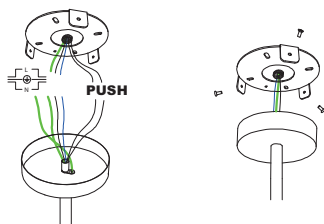
TUTTE LE OPERAZIONI DEVONO ESSERE EFFETTUATE DA PERSONALE SPECIALIZZATO

ALL OPERATIONS MUST BE CARRIED OUT BY QUALIFIED PERSON - TOUS LES OPERATIONS DOIVENT ETRE EFFECTUEES PAR DES PROFESSIONELLES



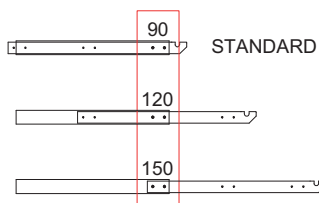
1.  
Fix the bracket to the ceiling (use appropriate anchors depending on the type of wall).

-----  
Fissare la staffa al soffitto (utilizzare tasselli appropriati in relazione al tipo di soffitto).



2.  
Connect the lamp to the electrical system.  
If the electrical system is equipped with a dimmer switch, in order to dimm the lamp, it is necessary to connect it to the electrical system by following the drawing below.

-----  
Connettere la lampada all'impianto elettrico.  
Nel caso l'impianto sia dotato di pulsante per la dimmerazione, per ottenere la dimmerazione della lampada connetterla all'impianto secondo schema.



3.  
Adjust the arms length fixing each arm with the two screws.

-----  
Regolare la lunghezza dei bracci fissando ogni braccio con le due viti.

4.  
Adjust the grade and height of the lamp using the steel cables. Push the pin to release the cable.

-----  
Regolare l'inclinazione e l'altezza della lampada usando i cavi d'acciaio. Premere il perno per liberare il cavo.

5.  
Insert the inner ring of the shade in the arms recess and close the flap rotating it.

-----  
Inserire l'anello interno del paralume nella cava dei bracci e chiudere la linguetta ruotandola.

6.  
Insert the diffuser disc from the bottom of the shade.

-----  
Inserire il disco diffusore dal basso del paralume.

TUTTE LE OPERAZIONI DEVONO ESSERE EFFETTUATE DA PERSONALE SPECIALIZZATO  
ALL OPERATIONS MUST BE CARRIED OUT BY QUALIFIED PERSON - TOUS LES OPERATIONS DOIVENT ETRE EFFECTUEES PAR DES PROFESSIONELLES

## OTi DALI 80/220-240/2A1 LT2 L

### SELV Constant current LED driver

### Wide operating area up to 2.1 A - dimmable

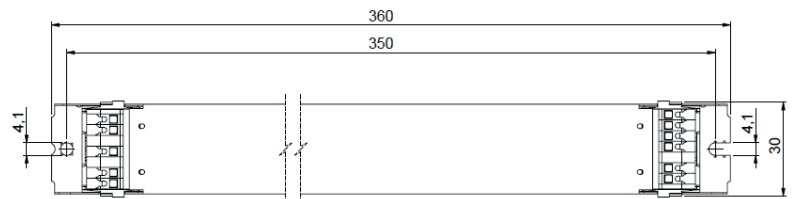
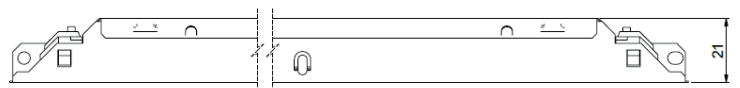
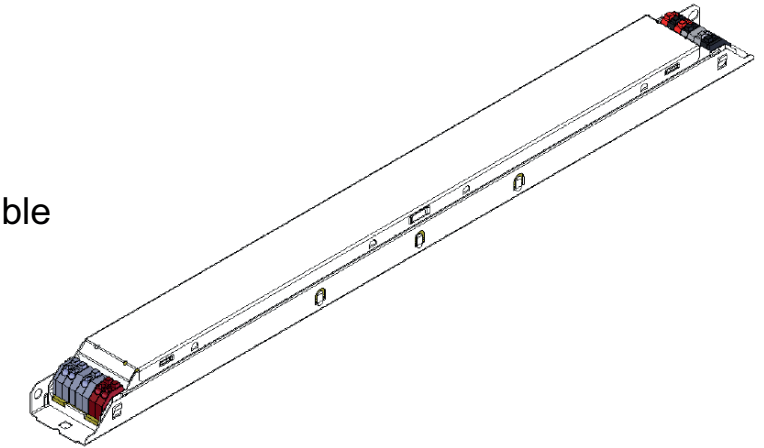
The reliable choice for the energy saving lighting:  
DALI dimmable, embedded corridor functionality  
and advanced Touch Dim with daylight harvesting,  
constant lumen output. Digitally programmable.  
Automatic current set through the LEDSet interface.

#### Benefits

Wide operating range: 1.0 – 2.1 A  
Adjustable current via LEDset or via software.  
Long lasting and high reliability.  
Slim white metal housing 30 x 21 mm.  
Double output connectors (parallel connection).  
Suitable for emergency lighting units.

#### Applications

Linear and area lighting.  
Office – industrial - shop



Housing material: metal, white painted.

#### Approval marks



In preparation, if not already printed on product label

#### Product Features

- Output current range 1.0 – 2.1 A
- Smart dimming down to 1%
- Very low output current ripple
- SELV equivalent Uout: 20 – 54 V
- Output power up to 80 W
- Mains voltage 220 – 240 V
- Suitable for emergency lighting
- Overload protection
- Overtemperature protection
- Fully digitally programmable
- 100'000 h lifetime at  $t_c = 70^\circ\text{C}$
- $t_c \text{ max} = 80^\circ\text{C}$
- Wide  $t_a$  range  $-25 - +45^\circ\text{C}$
- 5 years guarantee

#### Wiring information

##### Input

Gray 1 – Mains  
Gray 2 – Mains  
Gray 3 – n/a  
Gray 4 – PE  
White 5 – n/a  
White 6 – DALI  
White 7 – DALI

##### Output

Red 21 – LED +  
Black 22 – LED –  
Red 23 – LED +  
Black 24 – LED –  
White 25 – n/a  
White 26 – LEDset  
Black 27 – LEDset-aux

**21 & 23 internally connected**  
**22 & 24 internally connected**

Load wires length: 2 m max

- Connectors type, both input and output: Wago 250
- Wires cross section: massive leads 0.5 – 1.5 mm<sup>2</sup> / flexible leads 0.5 – 1.5 mm<sup>2</sup>
- Wires peeling length: 8.5 – 9.5 mm

